



## Background (MRCSP)

2010 – Strategic document 10-20 year horizon with short / medium term actions to get there.

2011/12 - Implementation Plan required focusing only on a few vulnerable services, with measurable activity. Establishment of 'clinical networks' focused on clinical sustainability and financial viability

2012/13 – Regional Services Plan, greater depth from 11/12 as we build towards a more detailed document in 13/14

## Our Regional Strategic Outcomes

- Improve the health of our population
- Reduce health inequalities



## Our Regional Objectives

1. Build the workforce
2. Work together for better care across the continuum
3. Improve quality
4. Integrate prevention into healthcare
5. Provide robust information for decision making
6. Improve Maori health outcomes

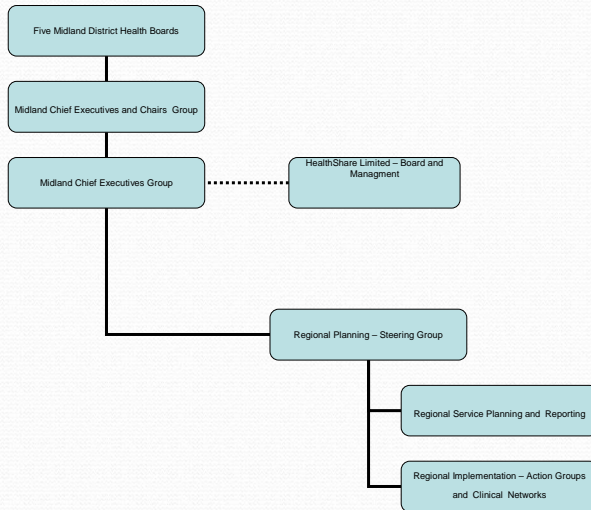
# Governance

- A Steering Group has operated throughout the process - broad clinical representation across the region, including Primary care.
- Clinically led action groups
- Quarterly reporting to NHB

# Steering Group Membership

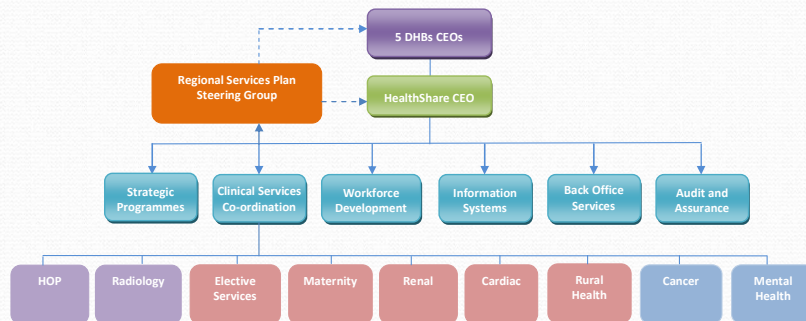
| Group                                 | Clinical  | Management  | Enabling   |
|---------------------------------------|---|---|--|
| DHBs                                  | <ul style="list-style-type: none"> <li>• Dr Tom Watson, Chief Medical Advisor Waikato DHB, Chair</li> <li>• Dr Ross Lawrenson, Waikato Clinical School</li> <li>• Dr Johan Morreau, Chief Medical Advisor, Lakes DHB</li> <li>• Kerry-Ann Adlam, Director of Nursing, Taranaki DHB</li> </ul> | <ul style="list-style-type: none"> <li>• Helene Carbonatto, GM P&amp;F, Tairāwhiti District Health</li> <li>• Phillip Balmer, Chief Operating Officer, Bay of Plenty DHB</li> </ul> | <ul style="list-style-type: none"> <li>• Ditre Tamatea, GM Maori Health, Waikato DHB</li> </ul>  |
| Primary Care                          | <ul style="list-style-type: none"> <li>• Dr Jo Scott-Jones, General Practitioner, Eastern BOP PHA (BSMC partner)</li> <li>• Dr Allan Moffitt, Clinical Director, Midland Health Network (BSMC partner)</li> </ul>   |   |  |
| Health Share Limited                  |   |   | <ul style="list-style-type: none"> <li>• Chief Executive, HSL</li> <li>• Angela Norman, workforce development manager</li> <li>• Darrin Hackett, Regional CIO</li> </ul> |
| National Health Board (in attendance) |   |   | <ul style="list-style-type: none"> <li>• Andrew Campbell-Stokes, Principal Planner, National Health Board</li> </ul>   |

# RSP structure



# Service Priorities - Structure

## Midland Region - Our Organisational Structure



## MRCSP Service and Infrastructure Priorities - Leadership



Each of the Service priority areas has a clinical chair, along with representation from nursing, midwifery ( for maternity) primary care and DHB managers

### Service priorities

- Maternity Services – Chair Dr Jeremy Gasson
- Renal Services – Chair Jo-Anne Deane, Clinical Director
- Cardiac Services – Chair Dr Gerry Devlin
- Rural Health – Professor Ross Lawrenson
- Cancer Control – Dr Charles de Groot
- Mental Health and Addiction – Eseta Nonu-Reid supported by a clinical leadership group

### Infrastructure priorities

- Information for Clinicians
- Building the Workforce
- Maori Health

Bay of Plenty

Lakes

Tairāwhiti

Taranaki

Waikato

## Terms of Reference - networks

- Developed for RSP action group
- Clinical Chairs
- Managerial functions
- All DHBs
- Primary Care
- NHB where applicable
- Bi-monthly meetings

## Regional Services Plan (RSP)

2012/13 continued focus along with new priority areas specified by Ministry of Health

- Radiology
- Health of Older People
- Electives, building on 11/12 activity
- Significant focus in Workforce and Information Services along with key central enablers such as HQSC, NHC, CIC

