



MENTAL HEALTH & ADDICTION REGIONAL NETWORK

Service Development • Workforce Development • Partnerships & Relationships

# Regionalisation: moving into the future

**Eseta Nonu-Reid**

**Midland Regional Director,  
Mental Health & Addiction**

Living well with supportive systems

Bay of Plenty



Lakes



Tairāwhiti



Taranaki



Waikato

# Government Direction



MENTAL HEALTH & ADDICTION REGIONAL NETWORK

Service Development • Workforce Development • Partnerships & Relationships

- ❁ Clear messages from Government
  - ❑ Reduction of back-room support functions
  - ❑ Linking regional processes and systems
  - ❑ Better Sooner More Convenient
- ❁ Ministry of Health reduction in role and function
  - ❑ National Health Board
  - ❑ Workforce New Zealand
  - ❑ National Information Planning
- ❁ New 'Blueprint'
  - ❑ Disbanding the Mental Health Commission
- ❁ Minister of Health's Mental Health & Addiction Action Plan 2010
  - ❑ Setting priorities

Living well with supportive systems

Bay of Plenty



Lakes



Tairāwhiti



Taranaki



Waikato

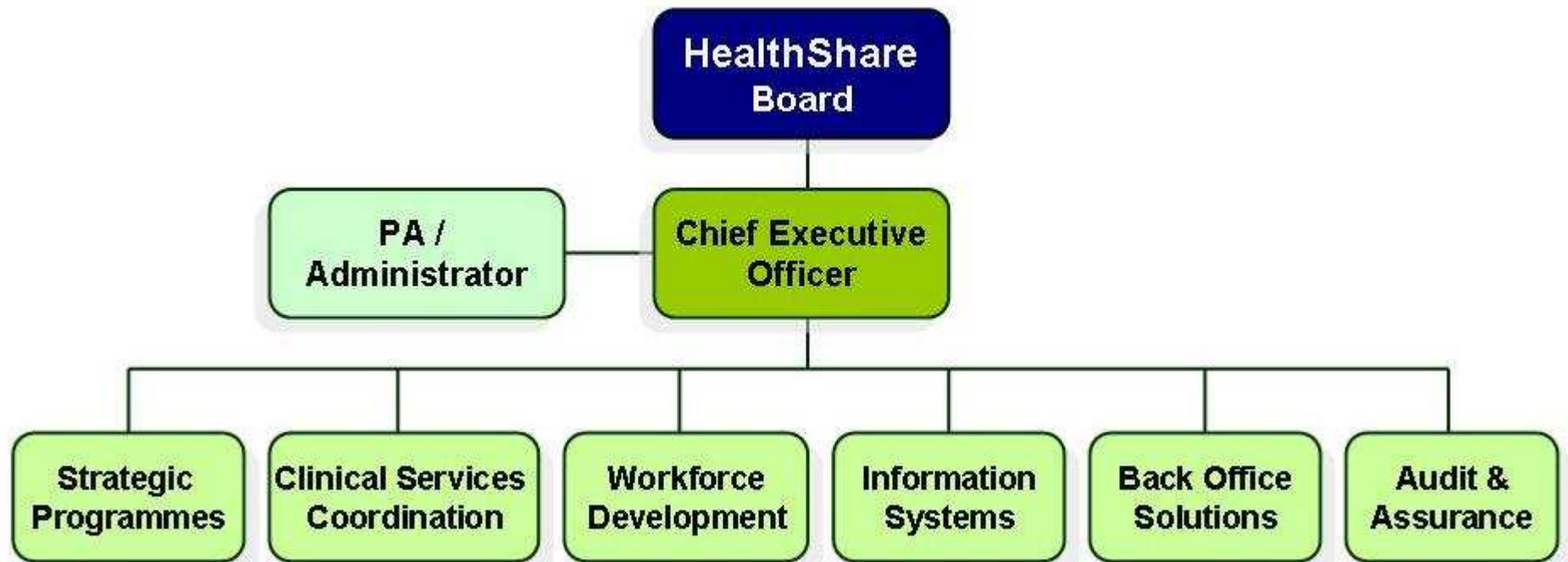
# HealthShare



MENTAL HEALTH & ADDICTION REGIONAL NETWORK

Service Development • Workforce Development • Partnerships & Relationships

## ❁ Midland DHBs Shared Service Agency



Living well with supportive systems

Bay of Plenty



Lakes



Tairāwhiti



Taranaki



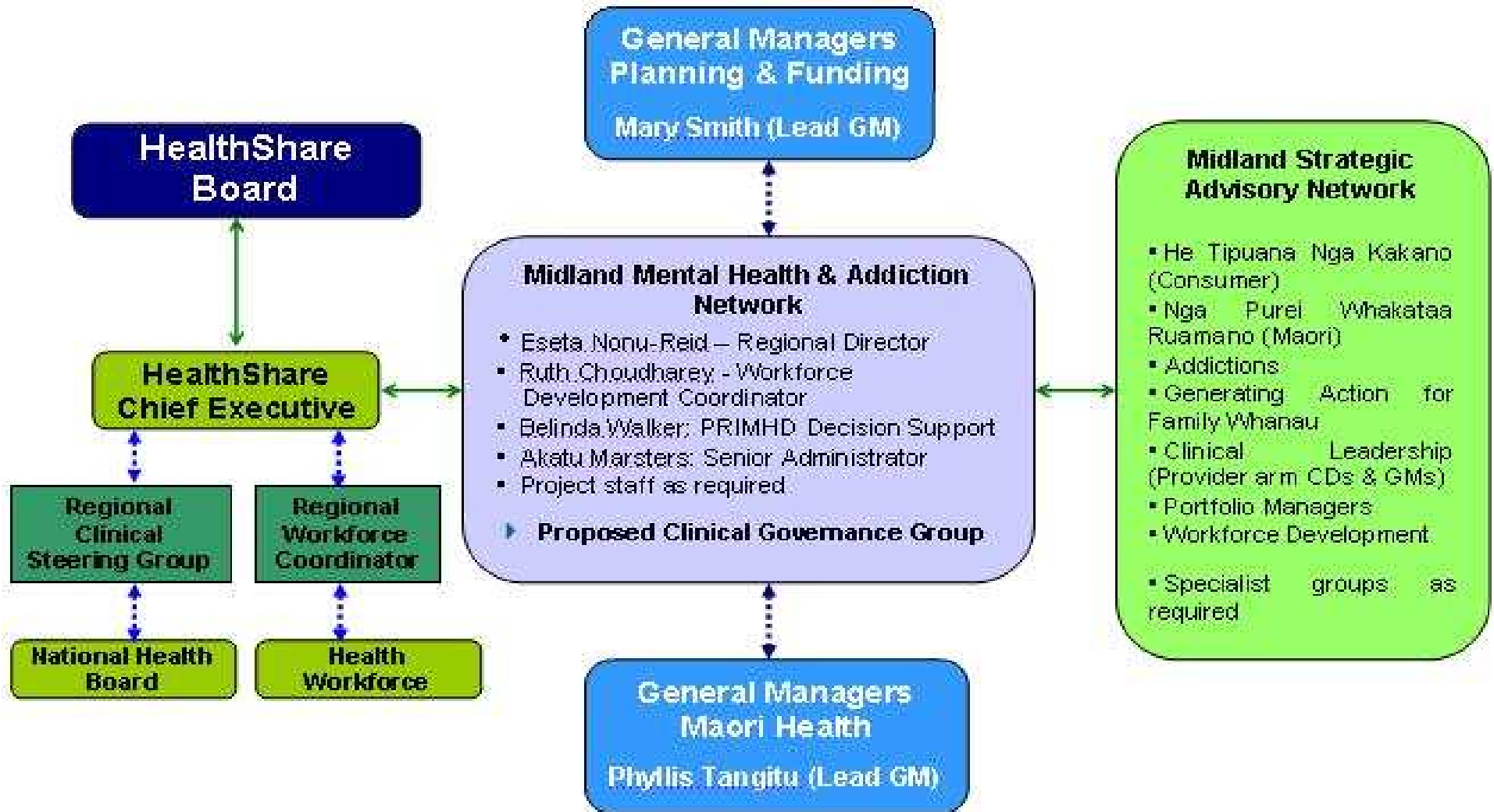
Waikato

# Midland MH&A Network



MENTAL HEALTH & ADDICTION REGIONAL NETWORK

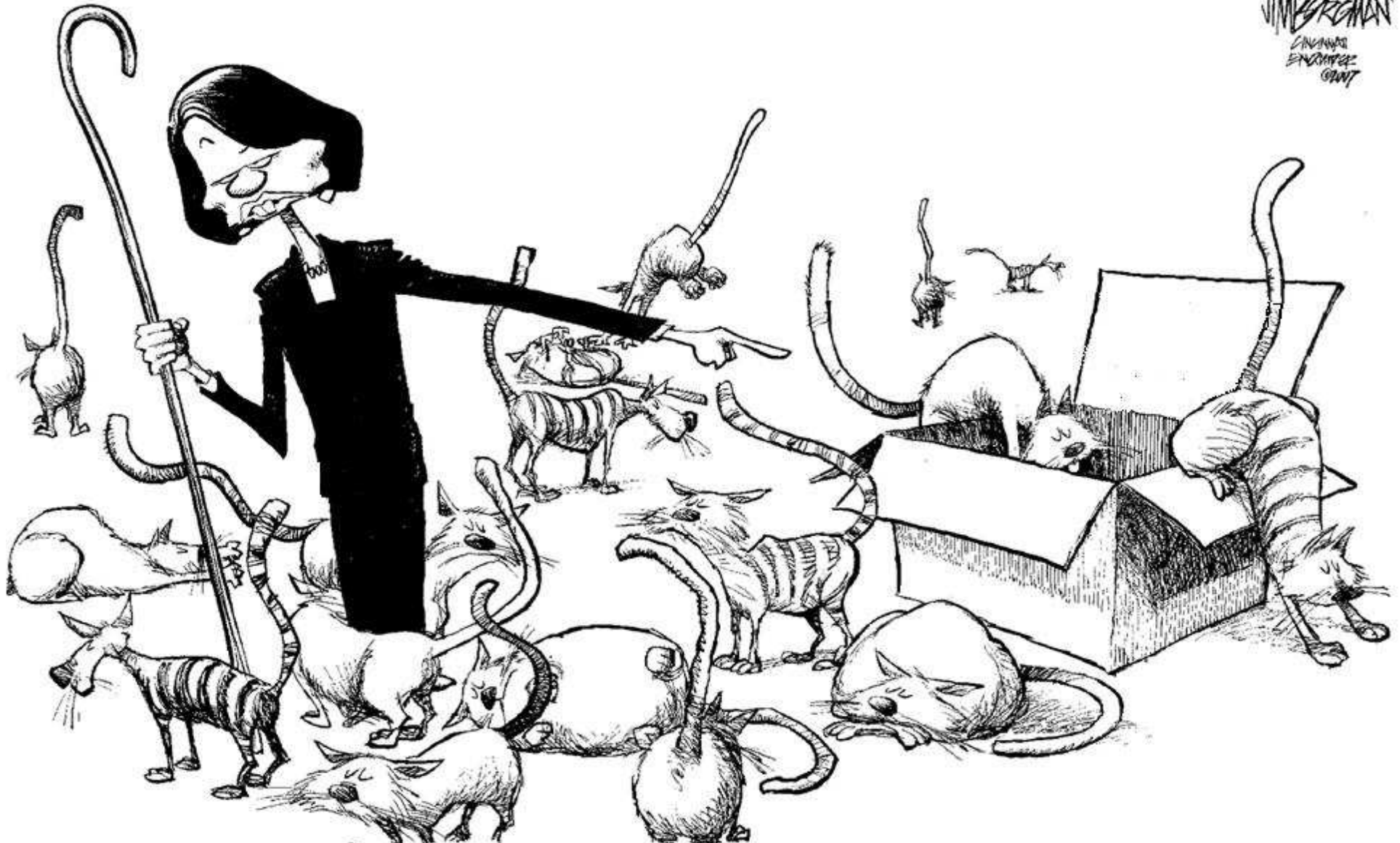
Service Development • Workforce Development • Partnerships & Relationships



Living well with supportive systems

Bay of Plenty • Lakes • Tairāwhiti • Taranaki • Waikato

# Challenges





# Challenges

- ❁ Working together – seeing ourselves as one health service
- ❁ Getting people to agree a common way forward
- ❁ Encouraging innovation and creativity
- ❁ Getting our systems to support innovation and creativity
- ❁ Maintaining high levels of motivation

# Opportunities

## *Notes on the gentle art of herding cats*

- 1. Cats don't like to be herded  
(in fact, you can't really herd cats)* 
  - 2. Cats prefer to herd themselves* 
  - 3. Cats understand that they sometimes  
need to be herded (that doesn't make them  
any easier to herd)* 
  - 4. Cats don't like being reminded that  
they are being herded* 
  - 5. Harsh herding has negative consequences* 
  - 6. Herd gently, but firmly, with affection  
or fish as a reward* 
- Remember, you are a cat, too* 
- we all need herding, at one time or another* 

Living well with supportive systems

# Opportunities

- ❁ Finding out what works
  - ❑ Learning from other regional work
- ❁ Developing regional agreements
- ❁ Leading change in the region/sector/specialties
- ❁ Focusing on business excellence
  - ❑ Clear strategies that can be measured
  - ❑ Alignment to common understanding
  - ❑ Performance monitoring that reflects what we do



# Regional Priorities



MENTAL HEALTH & ADDICTION REGIONAL NETWORK

Service Development • Workforce Development • Partnerships & Relationships

- ❁ National Health Board priorities
  - ❑ Refresh of the Forensic Futures Plan project
  - ❑ Review of High and Complex Needs services project
  - ❑ Integration into Regional Collaboration project
- ❁ Regional Clinical Services Plans
  - ❑ Review of Detox services project in preparation for the AOD Compulsory Treatment Act
  - ❑ CAMHS Tertiary Services review project
- ❁ Regional Annual Plan
  - ❑ Youth Forensic Services project
  - ❑ MH&A Services for Older People and Dementia project

Living well with supportive systems

Bay of Plenty



Lakes



Tairāwhiti



Taranaki



Waikato

# Regional Networks



MENTAL HEALTH & ADDICTION REGIONAL NETWORK

Service Development • Workforce Development • Partnerships & Relationships

## ❁ Northern DHBs Support Agency (NDSA)

□ [www.ndsa.co.nz](http://www.ndsa.co.nz)

## ❁ Midland DHBs Share Service Agency (HealthShare)

□ [www.midlandmentalhealthnetwork.co.nz](http://www.midlandmentalhealthnetwork.co.nz)

## ❁ Central Region Technical Advisory Services (TAS)

□ [www.centrtas.co.nz](http://www.centrtas.co.nz)

## ❁ South Island Shared Service Agency Limited (SISSAL)

□ [www.sissal.govt.nz](http://www.sissal.govt.nz)

Living well with supportive systems

Bay of Plenty



Lakes



Tairāwhiti



Taranaki



Waikato